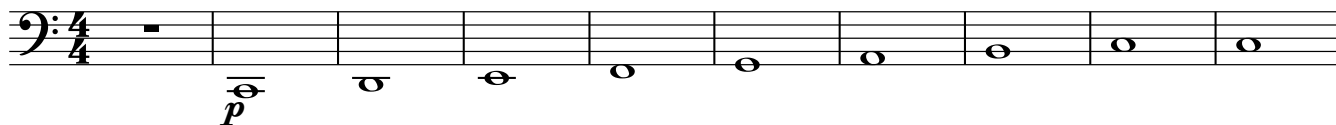


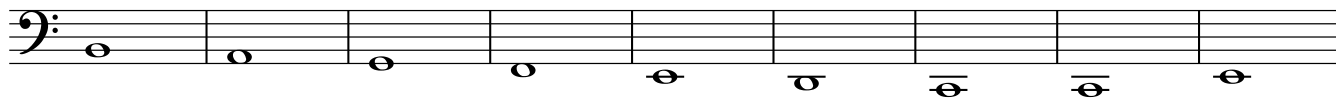
메이저 스케일 연습

낮은음자리표

♩ = 76



11



20



28



39



50



58



65



71



76



V.S.

80



84



88



92



95



98



100



102



메이저 스케일 연습

낮은음자리표

♩ = 76



11



20



28



39



50



58



65



71



76



V.S.

80



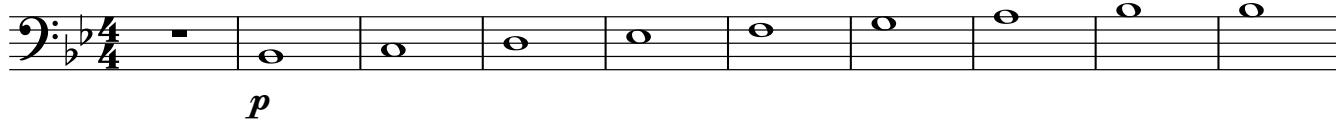
84



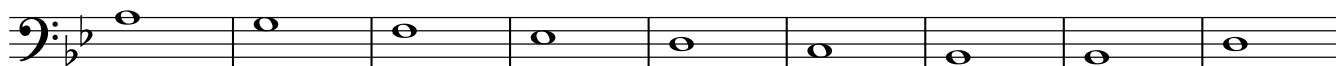
88



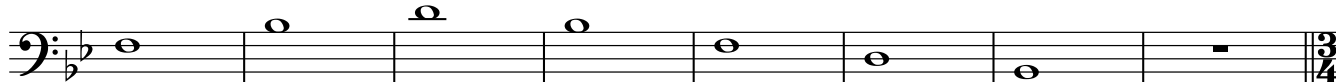
♩ = 76



11



20



28



39



50



58



65



71



76



V.S.

80



84



88



92



95



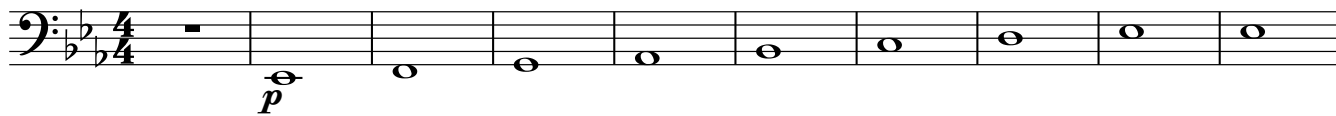
98



101



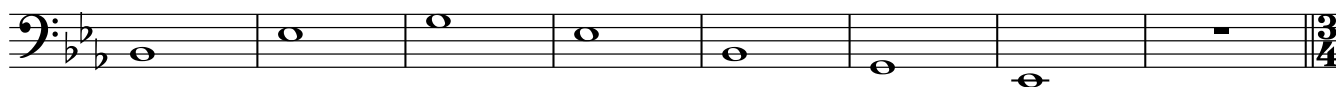
♩ = 76



11



20



28



39



50



58



65



71



76



V.S.

80



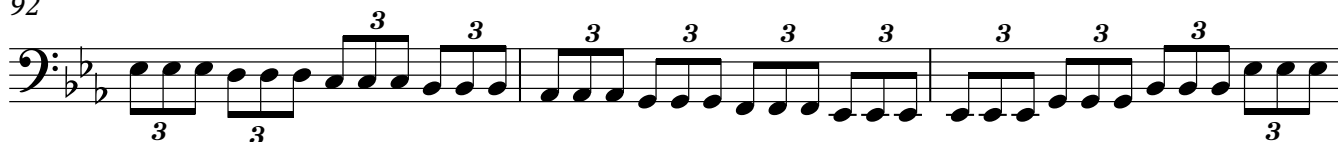
84



88



92



95



98



100



102



메이저 스케일 연습

낮은음자리표

서보빈

$\text{♩} = 76$

11

20

Musical notation for the bass line of 'The Rose Tree'. The key signature has two flats (B-flat and E-flat), and the time signature is 3/4. The melody consists of the following notes: G2 (half note), G2 (half note), G2 (half note), F2 (half note), E2 (half note), D2 (half note), C2 (half note), and a final whole rest. The piece ends with a double bar line and a 3/4 time signature.

28

39

50

[illegible]

58

[illegible]

65

The bass line of 'The Rose Tree' is written in 2/4 time with a key signature of three flats (B-flat, E-flat, A-flat). The melody begins with a whole rest, followed by a series of eighth and quarter notes: G2, A2, B-flat2, C3, D3, E-flat3, F3, G3, A3, B-flat3, C4, D4, E-flat4, F4, G4, A4, B-flat4, C5, D5, E-flat5, F5, G5, A5, B-flat5, C6, D6, E-flat6, F6, G6, A6, B-flat6, C7, D7, E-flat7, F7, G7, A7, B-flat7, C8, D8, E-flat8, F8, G8, A8, B-flat8, C9, D9, E-flat9, F9, G9, A9, B-flat9, C10, D10, E-flat10, F10, G10, A10, B-flat10, C11, D11, E-flat11, F11, G11, A11, B-flat11, C12, D12, E-flat12, F12, G12, A12, B-flat12, C13, D13, E-flat13, F13, G13, A13, B-flat13, C14, D14, E-flat14, F14, G14, A14, B-flat14, C15, D15, E-flat15, F15, G15, A15, B-flat15, C16, D16, E-flat16, F16, G16, A16, B-flat16, C17, D17, E-flat17, F17, G17, A17, B-flat17, C18, D18, E-flat18, F18, G18, A18, B-flat18, C19, D19, E-flat19, F19, G19, A19, B-flat19, C20, D20, E-flat20, F20, G20, A20, B-flat20, C21, D21, E-flat21, F21, G21, A21, B-flat21, C22, D22, E-flat22, F22, G22, A22, B-flat22, C23, D23, E-flat23, F23, G23, A23, B-flat23, C24, D24, E-flat24, F24, G24, A24, B-flat24, C25, D25, E-flat25, F25, G25, A25, B-flat25, C26, D26, E-flat26, F26, G26, A26, B-flat26, C27, D27, E-flat27, F27, G27, A27, B-flat27, C28, D28, E-flat28, F28, G28, A28, B-flat28, C29, D29, E-flat29, F29, G29, A29, B-flat29, C30, D30, E-flat30, F30, G30, A30, B-flat30, C31, D31, E-flat31, F31, G31, A31, B-flat31, C32, D32, E-flat32, F32, G32, A32, B-flat32, C33, D33, E-flat33, F33, G33, A33, B-flat33, C34, D34, E-flat34, F34, G34, A34, B-flat34, C35, D35, E-flat35, F35, G35, A35, B-flat35, C36, D36, E-flat36, F36, G36, A36, B-flat36, C37, D37, E-flat37, F37, G37, A37, B-flat37, C38, D38, E-flat38, F38, G38, A38, B-flat38, C39, D39, E-flat39, F39, G39, A39, B-flat39, C40, D40, E-flat40, F40, G40, A40, B-flat40, C41, D41, E-flat41, F41, G41, A41, B-flat41, C42, D42, E-flat42, F42, G42, A42, B-flat42, C43, D43, E-flat43, F43, G43, A43, B-flat43, C44, D44, E-flat44, F44, G44, A44, B-flat44, C45, D45, E-flat45, F45, G45, A45, B-flat45, C46, D46, E-flat46, F46, G46, A46, B-flat46, C47, D47, E-flat47, F47, G47, A47, B-flat47, C48, D48, E-flat48, F48, G48, A48, B-flat48, C49, D49, E-flat49, F49, G49, A49, B-flat49, C50, D50, E-flat50, F50, G50, A50, B-flat50, C51, D51, E-flat51, F51, G51, A51, B-flat51, C52, D52, E-flat52, F52, G52, A52, B-flat52, C53, D53, E-flat53, F53, G53, A53, B-flat53, C54, D54, E-flat54, F54, G54, A54, B-flat54, C55, D55, E-flat55, F55, G55, A55, B-flat55, C56, D56, E-flat56, F56, G56, A56, B-flat56, C57, D57, E-flat57, F57, G57, A57, B-flat57, C58, D58, E-flat58, F58, G58, A58, B-flat58, C59, D59, E-flat59, F59, G59, A59, B-flat59, C60, D60, E-flat60, F60, G60, A60, B-flat60, C61, D61, E-flat61, F61, G61, A61, B-flat61, C62, D62, E-flat62, F62, G62, A62, B-flat62, C63, D63, E-flat63, F63, G63, A63, B-flat63, C64, D64, E-flat64, F64, G64, A64, B-flat64, C65, D65, E-flat65, F65, G65, A65, B-flat65, C66, D66, E-flat66, F66, G66, A66, B-flat66, C67, D67, E-flat67, F67, G67, A67, B-flat67, C68, D68, E-flat68, F68, G68, A68, B-flat68, C69, D69, E-flat69, F69, G69, A69, B-flat69, C70, D70, E-flat70, F70, G70, A70, B-flat70, C71, D71, E-flat71, F71, G71, A71, B-flat71, C72, D72, E-flat72, F72, G72, A72, B-flat72, C73, D73, E-flat73, F73, G73, A73, B-flat73, C74, D74, E-flat74, F74, G74, A74, B-flat74, C75, D75, E-flat75, F75, G75, A75, B-flat75, C76, D76, E-flat76, F76, G76, A76, B-flat76, C77, D77, E-flat77, F77, G77, A77, B-flat77, C78, D78, E-flat78, F78, G78, A78, B-flat78, C79, D79, E-flat79, F79, G79, A79, B-flat79, C80, D80, E-flat80, F80, G80, A80, B-flat80, C81, D81, E-flat81, F81, G81, A81, B-flat81, C82, D82, E-flat82, F82, G82, A82, B-flat82, C83, D83, E-flat83, F83, G83, A83, B-flat83, C84, D84, E-flat84, F84, G84, A84, B-flat84, C85, D85, E-flat85, F85, G85, A85, B-flat85, C86, D86, E-flat86, F86, G86, A86, B-flat86, C87, D87, E-flat87, F87, G87, A87, B-flat87, C88, D88, E-flat88, F88, G88, A88, B-flat88, C89, D89, E-flat89, F89, G89, A89, B-flat89, C90, D90, E-flat90, F90, G90, A90, B-flat90, C91, D91, E-flat91, F91, G91, A91, B-flat91, C92, D92, E-flat92, F92, G92, A92, B-flat92, C93, D93, E-flat93, F93, G93, A93, B-flat93, C94, D94, E-flat94, F94, G94, A94, B-flat94, C95, D95, E-flat95, F95, G95, A95, B-flat95, C96, D96, E-flat96, F96, G96, A96, B-flat96, C97, D97, E-flat97, F97, G97, A97, B-flat97, C98, D98, E-flat98, F98, G98, A98, B-flat98, C99, D99, E-flat99, F99, G99, A99, B-flat99, C100, D100, E-flat100, F100, G100, A100, B-flat100, C101, D101, E-flat101, F101, G101, A101, B-flat101, C102, D102, E-flat102, F102, G102, A102, B-flat102, C103, D103, E-flat103, F103, G103, A103, B-flat103, C104, D104, E-flat104, F104, G104, A104, B-flat104, C105, D105, E-flat105, F105, G105, A105, B-flat105, C106, D106, E-flat106, F106, G106, A106, B-flat106, C107, D107, E-flat107, F107, G107, A107, B-flat107, C108, D108, E-flat108, F108, G108, A108, B-flat108, C109, D109, E-flat109, F109, G109, A109, B-flat109, C110, D110, E-flat110, F110, G110, A110, B-flat110, C111, D111, E-flat111, F111, G111, A111, B-flat111, C112, D112, E-flat112, F112, G112, A112, B-flat112, C113, D113, E-flat113, F113, G113, A113, B-flat113, C114, D114, E-flat114, F114, G114, A114, B-flat114, C115, D115, E-flat115, F115, G115, A115, B-flat115, C116, D116, E-flat116, F116, G116, A116, B-flat116, C117, D117, E-flat117, F117, G117, A117, B-flat117, C118, D118, E-flat118, F118, G118, A118, B-flat118, C119, D119, E-flat119, F119, G119, A119, B-flat119, C120, D120, E-flat120, F120, G120, A120, B-flat120, C121, D121, E-flat121, F121, G121, A121, B-flat121, C122, D122, E-flat122, F122, G122, A122, B-flat122, C123, D123, E-flat123, F123, G123, A123, B-flat123, C124, D124, E-flat124, F124, G124, A124, B-flat124, C125, D125, E-flat125, F125, G125, A125, B-flat125, C126, D126, E-flat126, F126, G126, A126, B-flat126, C127, D127, E-flat127, F127, G127, A127, B-flat127, C128, D128, E-flat128, F128, G128, A128, B-flat128, C129, D129, E-flat129, F129, G129, A129, B-flat129, C130, D130, E-flat130, F130, G130, A130, B-flat130, C131, D

71

The bass line of 'The Rose Tree' is written in 3/4 time with a key signature of one flat (B-flat). The melody begins with a half note G2, followed by a quarter note F2, and then a quarter note E2. After a double bar line, it continues with a quarter note D2, a quarter note C2, and a quarter note B1. The final measure consists of a quarter note A1, a quarter note G1, and a quarter note F1.

76

Musical notation for the bass line of 'The Rose Tree'. The key signature is B-flat major (two flats). The melody consists of eighth and sixteenth notes, with some beamed sixteenth notes in the third measure.

V.S.

80



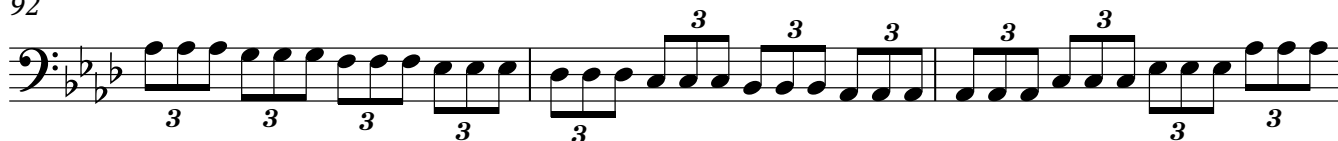
84



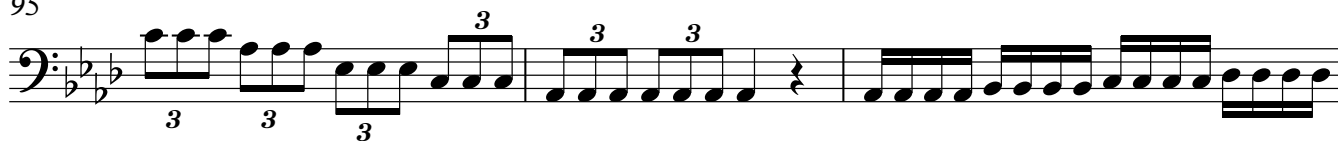
88



92



95



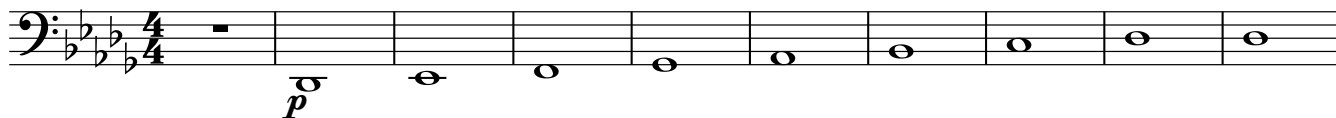
98



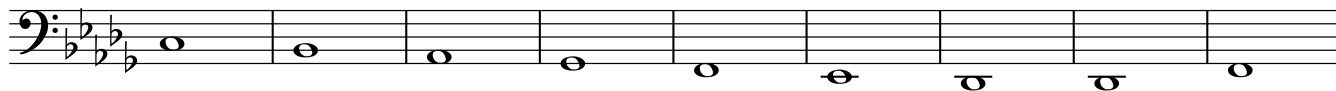
101



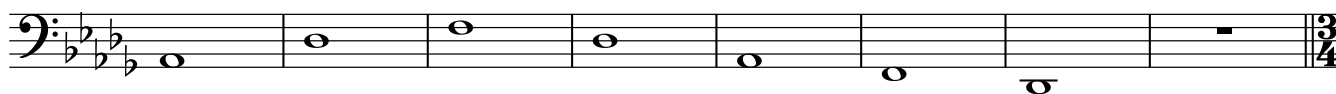
♩ = 76



11



20



28



39



50



58



65



71



76



V.S.

80



84



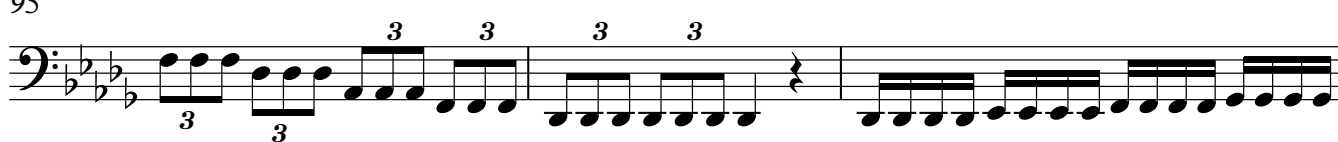
88



92



95



98



100



102



메이저 스케일 연습

낮은음자리표

서보빈

$\text{♩} = 76$

[illegible]

11

20

Musical notation for the bass line of 'The Rose Tree'. The key signature has three flats (B-flat, E-flat, A-flat). The time signature is 3/4. The melody consists of the following notes: G2 (half note), A2 (quarter note), B-flat2 (quarter note), A2 (quarter note), G2 (quarter note), F2 (quarter note), E-flat2 (quarter note), D2 (half note), and a final whole rest. The piece ends with a double bar line and a 3/4 time signature.

28

39

50

The first staff of music is written in bass clef with a key signature of three flats (B-flat, E-flat, A-flat) and a 4/4 time signature. It begins with a half note G2, followed by a half note F2, and then a half note E2. A double bar line with repeat dots follows. The second measure contains a half note D2, and the third measure contains a half note C2. The fourth measure contains a half note B1, and the fifth measure contains a half note A1. The sixth measure contains a half note G1, and the seventh measure contains a half note F1. The eighth measure contains a half note E1, and the ninth measure contains a half note D1. The tenth measure contains a half note C1, and the eleventh measure contains a half note B0.

58

[illegible]

65

The bass line of 'The Rose Tree' is written in 2/4 time with a key signature of three flats (B-flat, E-flat, A-flat). The melody begins with a whole rest, followed by a series of eighth and quarter notes: G2, A2, B-flat2, C3, D3, E-flat3, F3, G3, A3, B-flat3, C4, D4, E4, F4, G4, A4, B-flat4, C5, D5, E5, F5, G5, A5, B-flat5, C6, D6, E6, F6, G6, A6, B-flat6, C7, D7, E7, F7, G7, A7, B-flat7, C8, D8, E8, F8, G8, A8, B-flat8, C9, D9, E9, F9, G9, A9, B-flat9, C10, D10, E10, F10, G10, A10, B-flat10, C11, D11, E11, F11, G11, A11, B-flat11, C12, D12, E12, F12, G12, A12, B-flat12, C13, D13, E13, F13, G13, A13, B-flat13, C14, D14, E14, F14, G14, A14, B-flat14, C15, D15, E15, F15, G15, A15, B-flat15, C16, D16, E16, F16, G16, A16, B-flat16, C17, D17, E17, F17, G17, A17, B-flat17, C18, D18, E18, F18, G18, A18, B-flat18, C19, D19, E19, F19, G19, A19, B-flat19, C20, D20, E20, F20, G20, A20, B-flat20, C21, D21, E21, F21, G21, A21, B-flat21, C22, D22, E22, F22, G22, A22, B-flat22, C23, D23, E23, F23, G23, A23, B-flat23, C24, D24, E24, F24, G24, A24, B-flat24, C25, D25, E25, F25, G25, A25, B-flat25, C26, D26, E26, F26, G26, A26, B-flat26, C27, D27, E27, F27, G27, A27, B-flat27, C28, D28, E28, F28, G28, A28, B-flat28, C29, D29, E29, F29, G29, A29, B-flat29, C30, D30, E30, F30, G30, A30, B-flat30, C31, D31, E31, F31, G31, A31, B-flat31, C32, D32, E32, F32, G32, A32, B-flat32, C33, D33, E33, F33, G33, A33, B-flat33, C34, D34, E34, F34, G34, A34, B-flat34, C35, D35, E35, F35, G35, A35, B-flat35, C36, D36, E36, F36, G36, A36, B-flat36, C37, D37, E37, F37, G37, A37, B-flat37, C38, D38, E38, F38, G38, A38, B-flat38, C39, D39, E39, F39, G39, A39, B-flat39, C40, D40, E40, F40, G40, A40, B-flat40, C41, D41, E41, F41, G41, A41, B-flat41, C42, D42, E42, F42, G42, A42, B-flat42, C43, D43, E43, F43, G43, A43, B-flat43, C44, D44, E44, F44, G44, A44, B-flat44, C45, D45, E45, F45, G45, A45, B-flat45, C46, D46, E46, F46, G46, A46, B-flat46, C47, D47, E47, F47, G47, A47, B-flat47, C48, D48, E48, F48, G48, A48, B-flat48, C49, D49, E49, F49, G49, A49, B-flat49, C50, D50, E50, F50, G50, A50, B-flat50, C51, D51, E51, F51, G51, A51, B-flat51, C52, D52, E52, F52, G52, A52, B-flat52, C53, D53, E53, F53, G53, A53, B-flat53, C54, D54, E54, F54, G54, A54, B-flat54, C55, D55, E55, F55, G55, A55, B-flat55, C56, D56, E56, F56, G56, A56, B-flat56, C57, D57, E57, F57, G57, A57, B-flat57, C58, D58, E58, F58, G58, A58, B-flat58, C59, D59, E59, F59, G59, A59, B-flat59, C60, D60, E60, F60, G60, A60, B-flat60, C61, D61, E61, F61, G61, A61, B-flat61, C62, D62, E62, F62, G62, A62, B-flat62, C63, D63, E63, F63, G63, A63, B-flat63, C64, D64, E64, F64, G64, A64, B-flat64, C65, D65, E65, F65, G65, A65, B-flat65, C66, D66, E66, F66, G66, A66, B-flat66, C67, D67, E67, F67, G67, A67, B-flat67, C68, D68, E68, F68, G68, A68, B-flat68, C69, D69, E69, F69, G69, A69, B-flat69, C70, D70, E70, F70, G70, A70, B-flat70, C71, D71, E71, F71, G71, A71, B-flat71, C72, D72, E72, F72, G72, A72, B-flat72, C73, D73, E73, F73, G73, A73, B-flat73, C74, D74, E74, F74, G74, A74, B-flat74, C75, D75, E75, F75, G75, A75, B-flat75, C76, D76, E76, F76, G76, A76, B-flat76, C77, D77, E77, F77, G77, A77, B-flat77, C78, D78, E78, F78, G78, A78, B-flat78, C79, D79, E79, F79, G79, A79, B-flat79, C80, D80, E80, F80, G80, A80, B-flat80, C81, D81, E81, F81, G81, A81, B-flat81, C82, D82, E82, F82, G82, A82, B-flat82, C83, D83, E83, F83, G83, A83, B-flat83, C84, D84, E84, F84, G84, A84, B-flat84, C85, D85, E85, F85, G85, A85, B-flat85, C86, D86, E86, F86, G86, A86, B-flat86, C87, D87, E87, F87, G87, A87, B-flat87, C88, D88, E88, F88, G88, A88, B-flat88, C89, D89, E89, F89, G89, A89, B-flat89, C90, D90, E90, F90, G90, A90, B-flat90, C91, D91, E91, F91, G91, A91, B-flat91, C92, D92, E92, F92, G92, A92, B-flat92, C93, D93, E93, F93, G93, A93, B-flat93, C94, D94, E94, F94, G94, A94, B-flat94, C95, D95, E95, F95, G95, A95, B-flat95, C96, D96, E96, F96, G96, A96, B-flat96, C97, D97, E97, F97, G97, A97, B-flat97, C98, D98, E98, F98, G98, A98, B-flat98, C99, D99, E99, F99, G99, A99, B-flat99, C100, D100, E100, F100, G100, A100, B-flat100, C101, D101, E101, F101, G101, A101, B-flat101, C102, D102, E102, F102, G102, A102, B-flat102, C103, D103, E103, F103, G103, A103, B-flat103, C104, D104, E104, F104, G104, A104, B-flat104, C105, D105, E105, F105, G105, A105, B-flat105, C106, D106, E106, F106, G106, A106, B-flat106, C107, D107, E107, F107, G107, A107, B-flat107, C108, D108, E108, F108, G108, A108, B-flat108, C109, D109, E109, F109, G109, A109, B-flat109, C110, D110, E110, F110, G110, A110, B-flat110, C111, D111, E111, F111, G111, A111, B-flat111, C112, D112, E112, F112, G112, A112, B-flat112, C113, D113, E113, F113, G113, A113, B-flat113, C114, D114, E114, F114, G114, A114, B-flat114, C115, D115, E115, F115, G115, A115, B-flat115, C116, D116, E116, F116, G116, A116, B-flat116, C117, D117, E117, F117, G117, A117, B-flat117, C118, D118, E118, F118, G118, A118, B-flat118, C119, D119, E119, F119, G119, A119, B-flat119, C120, D120, E120, F120, G120, A120, B-flat120, C121, D121, E121, F121, G121, A121, B-flat121, C122, D122, E122, F122, G122, A122, B-flat122, C123, D123, E123, F123, G123, A123, B-flat123, C124, D124, E124, F124, G124, A124, B-flat124, C125, D125, E125, F125, G125, A125, B-flat125, C126, D126, E126, F126, G126, A126, B-flat126, C127, D127, E127, F127, G127, A127, B-flat127, C128, D128, E128, F128, G128, A128, B-flat128, C129, D129, E129, F129, G129, A129, B-flat129, C130, D130, E130, F130, G130, A130, B-flat130, C131, D131, E131, F131, G131, A131, B-flat131, C132, D132, E132, F132, G132, A132, B-flat132, C133, D133, E133, F133, G133, A133, B-flat133, C134, D134, E134, F134, G134,

71

The bass line of 'The Rose Tree' is written in 3/4 time and D minor. It begins with a treble clef and a key signature of two flats. The melody starts on a whole note G2, followed by a half note F2, and a quarter note E2. After a double bar line, it continues with a quarter note D2, an eighth note C2, and a sixteenth note B1. The final measure consists of a quarter note A1, an eighth note G1, and a sixteenth note F1.

76

The musical notation for the bass staff shows a sequence of notes across five measures. The key signature has three flats (B-flat, E-flat, A-flat). The notes are as follows:

Measure	Note 1	Note 2	Note 3	Note 4	Note 5
1	A ₂	G ₂	F ₂	E ₂	D ₂
2	C ₃	B ₂	A ₂	G ₂	F ₂
3	E ₂	D ₂	C ₃	B ₂	A ₂
4	G ₂	F ₂	E ₂	D ₂	C ₃
5	B ₂	A ₂	G ₂	F ₂	E ₂

V.S.

80



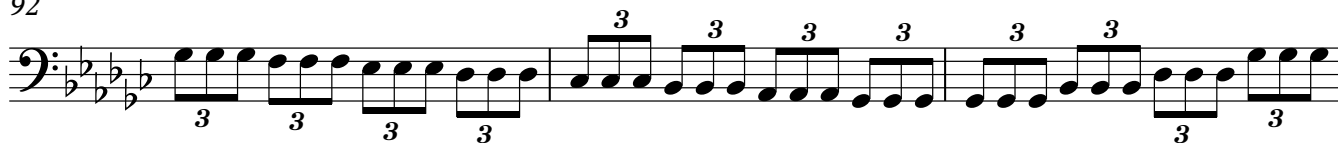
84



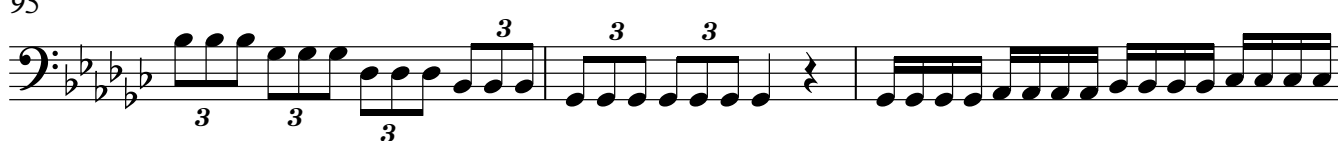
88



92



95



98



101



메이저 스케일 연습

낮은음자리표

$\text{♩} = 76$

11

20

28

39

50

58

65

71

76

V.S.

80



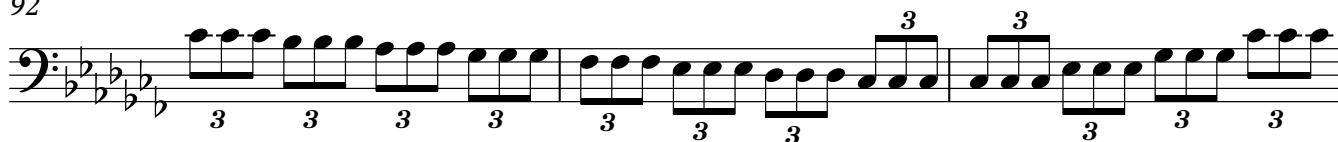
84



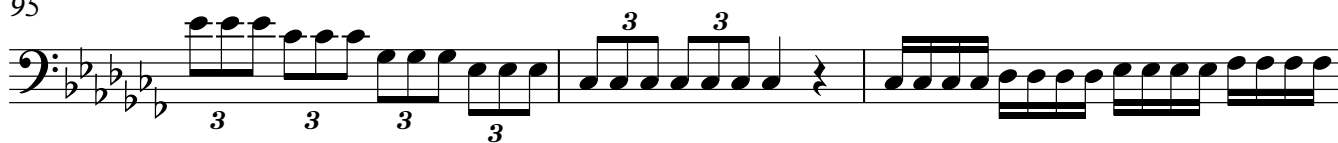
88



92



95



98



100



102

